

# RADIAL CHOKE COIL

RCS1010 SERIES

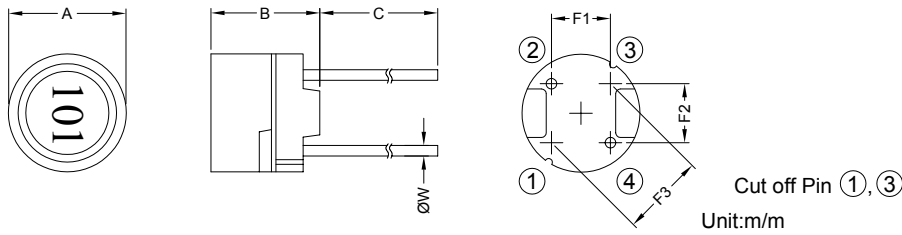
## 1. PART NO. EXPRESSION :

RCS1010100MZ F  
 (a) (b) (c) (d)(e)(f)

- (a) Series code
- (b) Dimension code
- (c) Inductance code : 100 = 10uH

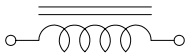
- (d) Tolerance code : K = ±10%, M = ±20%
- (e) X, Y, Z : Standard part
- (f) F : Lead Free

## 2. CONFIGURATION & DIMENSIONS :

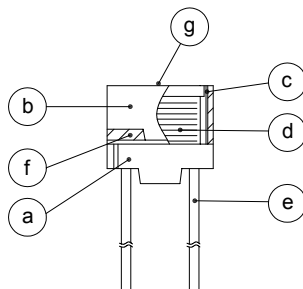


A	B	C	F1	F2	F3	ØW
10.0±0.5	10.0±0.5	15.00±3.0	4.00±0.5	5.00±0.5	6.40±0.5	0.80±0.10

## 3. SCHEMATIC :



## 4. MATERIALS :



- (a) Core : DR Ferrite Core
- (b) Core : RI Ferrite Core
- (c) Sleeve : Phenolic
- (d) Wire : Enamelled Copper Wire
- (e) Lead : Tinned Copper Wire
- (f) Adhesive : Epoxy
- (g) Ink : Bon Margue

## 5. GENERAL SPECIFICATION :

- a) The inductance drop at rated is 10% max.
- b) Temp. rise : 40°C max. at rated current
- c) Storage temp. : -40°C to +125°C
- d) Operating temp. : -40°C to +85°C



**RoHS Compliant**

NOTE : Specifications subject to change without notice. Please check our website for latest information.

18.04.2008

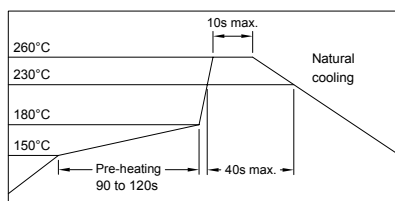


**SUPERWORLD ELECTRONICS (S) PTE LTD**

### 6. ELECTRICAL CHARACTERISTICS :

Part No.	Inductance ( $\mu$ H )	Test Frequency ( Hz )	RDC ( $\Omega$ ) Max.	IDC ( A ) Max.
RCS1010100MZF	10 $\pm$ 20%	2.52M	0.023	3.51
RCS1010120MZF	12 $\pm$ 20%	2.52M	0.024	3.24
RCS1010150MZF	15 $\pm$ 20%	2.52M	0.036	2.88
RCS1010180MZF	18 $\pm$ 20%	2.52M	0.039	2.61
RCS1010220MZF	22 $\pm$ 20%	2.52M	0.042	2.34
RCS1010270MZF	27 $\pm$ 20%	2.52M	0.045	2.16
RCS1010330MZF	33 $\pm$ 20%	2.52M	0.057	1.89
RCS1010390MZF	39 $\pm$ 20%	2.52M	0.076	1.80
RCS1010470MZF	47 $\pm$ 20%	2.52M	0.100	1.62
RCS1010560KZF	56 $\pm$ 10%	2.52M	0.110	1.44
RCS1010680KZF	68 $\pm$ 10%	2.52M	0.150	1.35
RCS1010820KZF	82 $\pm$ 10%	2.52M	0.160	1.26
RCS1010101KZF	100 $\pm$ 10%	1K	0.190	1.08
RCS1010121KZF	120 $\pm$ 10%	1K	0.210	0.99
RCS1010151KZF	150 $\pm$ 10%	1K	0.230	0.90
RCS1010181KZF	180 $\pm$ 10%	1K	0.260	0.82
RCS1010221KZF	220 $\pm$ 10%	1K	0.290	0.74
RCS1010271KZF	270 $\pm$ 10%	1K	0.360	0.67
RCS1010331KZF	330 $\pm$ 10%	1K	0.510	0.61
RCS1010391KZF	390 $\pm$ 10%	1K	0.690	0.55
RCS1010471KZF	470 $\pm$ 10%	1K	0.980	0.51
RCS1010561KZF	560 $\pm$ 10%	1K	1.100	0.46
RCS1010681KZF	680 $\pm$ 10%	1K	1.200	0.42
RCS1010821KZF	820 $\pm$ 10%	1K	1.300	0.38
RCS1010102KZF	1000 $\pm$ 10%	1K	1.500	0.35

### RECOMMENDED SOLDERING CONDITIONS REFLOW SOLDERINGS



**RoHS Compliant**

NOTE : Specifications subject to change without notice. Please check our website for latest information.

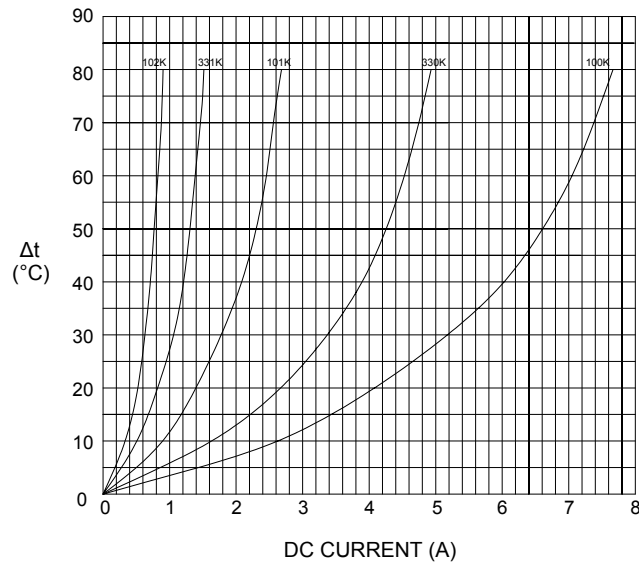
18.04.2008



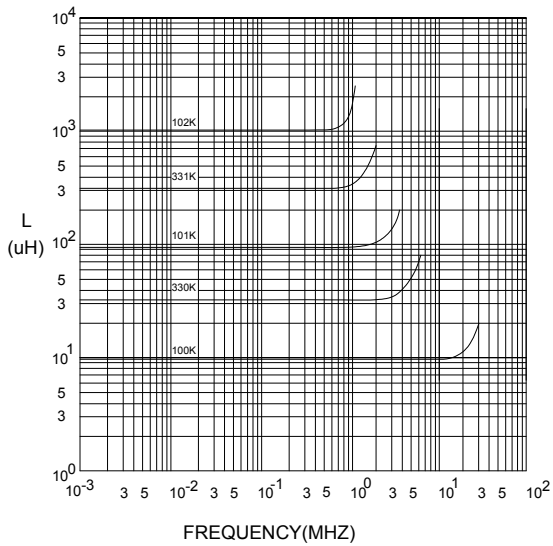
**SUPERWORLD ELECTRONICS (S) PTE LTD**

## 7. CHARACTERISTICS CURVES :

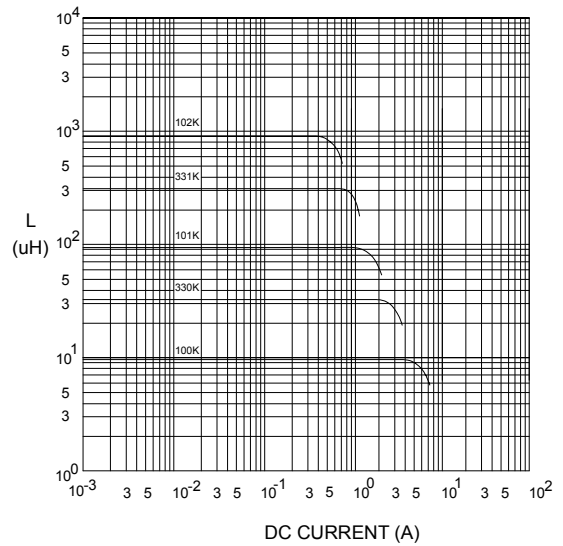
@ TEMP. RISE VS. DC SUPERPOSITION RESPONSE CURVE



@ INDUCTANCE VS. FREQUENCY RESPONSE CURVE



@ INDUCTANCE VS. DC SUPERPOSITION RESPONSE CURVE



NOTE : Specifications subject to change without notice. Please check our website for latest information.



**RoHS Compliant**

18.04.2008



**SUPERWORLD ELECTRONICS (S) PTE LTD**

# RADIAL CHOKE COIL

RCS1010 SERIES

8. UL CARD :

**QMFZ2** **May 10, 1995**  
**Component-Plastics**  
**SUMITOMO BAKELITE CO LTD** **E41429 (M)**  
(B-cont. from A card)

AM - 3130A	ALL	0.99	94V-0	130	130	130	0	3	—	—	—
		3.0	94V-0	130	130	130	0	2	—	5	0
AM-1120, AM112	BK	0.99	94V-0	130	130	130	—	—	—	—	—
AM-1130, AM-113	BK	0.40	94V-0	130	130	130	—	—	—	—	—
	BK,GN	0.75	94V-0	130	130	130	0	2	—	—	—
	ALL	1.1	94V-0	130	130	130	0	1	—	—	—
		1.5	94V-0	130	130	130	0	1	—	—	—
		3.0	94V-0	130	130	130	0	1	0	5	0
AM-1140, AM-1130, AM-3131, AM-3000, AM-300	ALL	1.1	94V-0	130	130	130	1	0	—	—	—
	BK	1.5	94V-0	130	130	130	1	0	—	—	—
		3.0	94V-0	130	130	130	0	0	0	5	0
	BK	0.74	94V-0	130	130	130	—	—	—	—	—

**Reports:** November 14,1983, September 16, 1971 : December 31,1973;September 16,1971.

**Replaces E41429b dated June 7, 1994.** (Cont. on C card)  
**683540014 N7047 Underwriters Laboratories Inc.®** D11/0029309

**OBMW2** **November 30, 2000**  
**Magnet Wire - Component**  
**PACIFIC ELECTRIC WIRE & CABLE (SHENZHEN) CO LTD** **E201757**  
**607 BAOLONG INDUSTRIAL ESTATE LONGGANG, SHENZHEN**  
**GUANGDONG CHINA**

Mtl Dsg	BC	Coating Type	TC	ANSI Type	TI
UEW/U		Polyurethane	—	—	130
PEW/U		Polyester	—	MW5-C	155°C
PEWH/U		Modified Polyester	—	MW30-C	180
PEW-NY/U		Polyester	Polyamide	MW24-C	155
HAI/U		Polyester(Amide)(Imide)	Polyamideimide	MW35,73	200
UEW-NY/U		Polyurethane	Polyamide	MW80-C	155
				MW28-C	130

**Marking:** Company name and material designation or marked designation on package or reel, and Recognized Component Mark.

See General Information Preceding These Recognitions

1/3/2001 **Underwriters Laboratories Inc.** Card 1 of 2



**RoHS Compliant**

NOTE : Specifications subject to change without notice. Please check our website for latest information.

18.04.2008